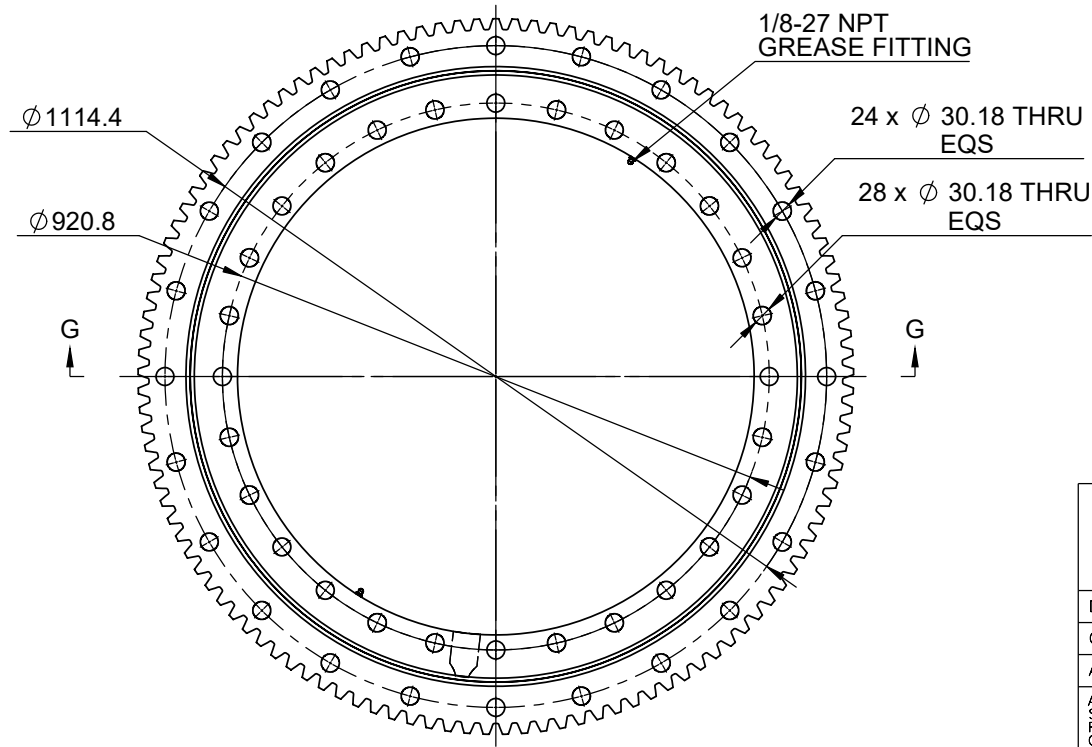
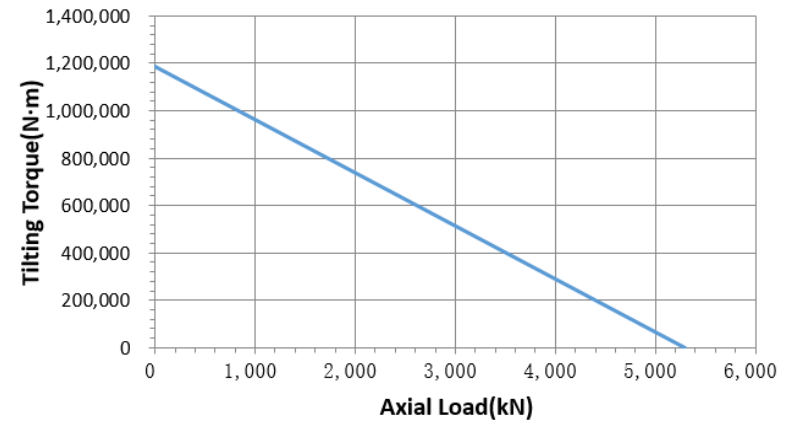


Gear data					
Module	m_n	10.16	Addendum	h_a	8.128
No. of teeth	z	117	Tooth height	h	18.288
Pressure angle	α_n	20°	Modification coefficient	x_n	0
Helix angle		0°	Helix position		-
common normal line	$W \frac{Ebms}{Ebmi}$	421.563	-0.18 -0.361	Cross-tooth No.	
				k	14
Radial run-out			F_y	≤0.60	
Max gear tooth load			F_z	140684 N	



Tilting Torque VS Axial Load



On the dimensions with parenthesis:

- 1) These are for reference only.
- 2) This is a preliminary dimension and may vary in the actual product.
- 3) If this dimension is important to the application, please communicate this back to KMI.

DESIGNED BY	JXY	2020/11/26
CHECKED BY	C F	2020/11/26
APPROVED BY	WMS	2020/11/26

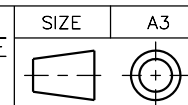
KMI GROUP
www.kinematicsmfg.com

ALL PROPRIETARY RIGHTS IN THE SUBJECT MATTER HEREOF ARE RESERVED, AND NO PERMISSION IS GRANTED TO REPRODUCE THIS PRINT IN WHOLE OR IN PART, OR TO DISCLOSE ANY OF THE INFORMATION TO OTHERS.

WEIGHT	SCALE
331.889Kg	1:6

Slewing Ring

SYMBOL ISO



THE TOLERANCE NOT MENTIONED IS REFERRED TO ISO2768-VL CASTING TOLERANCE ISO 8062-CT10

KTE-870

REV
A