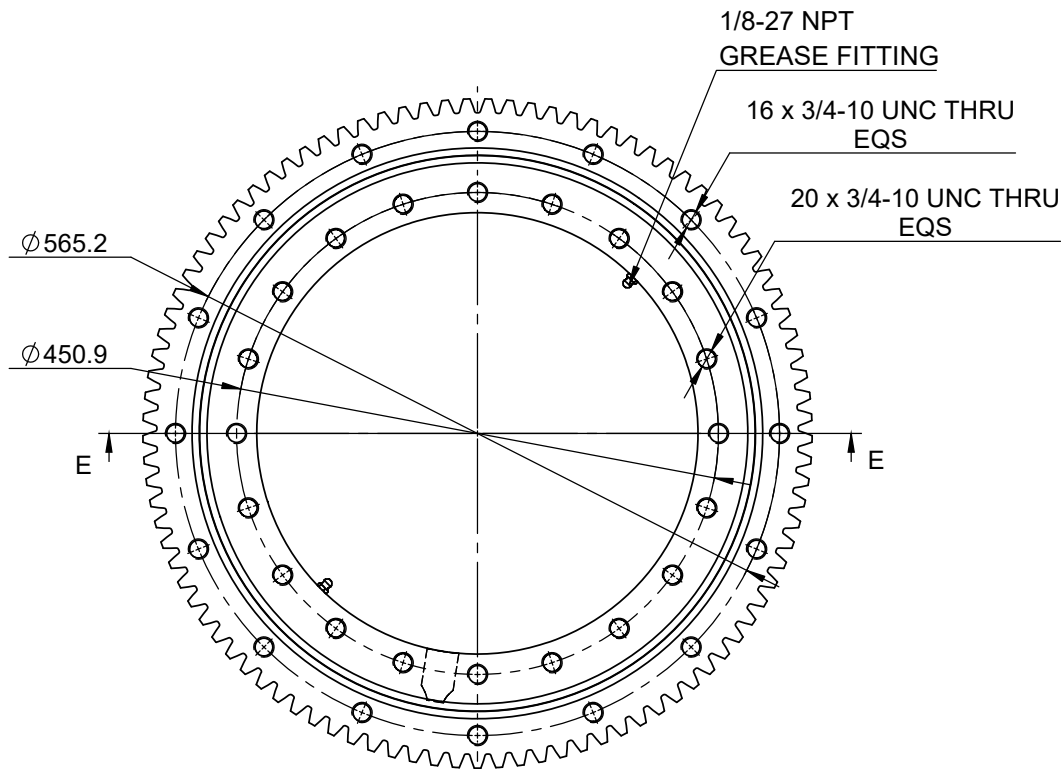
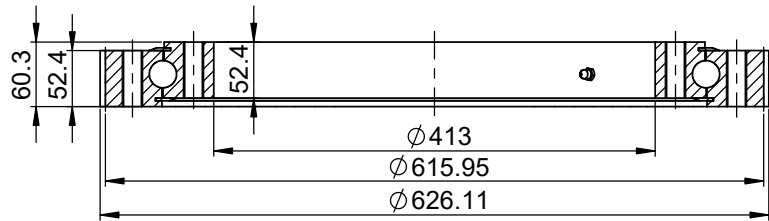


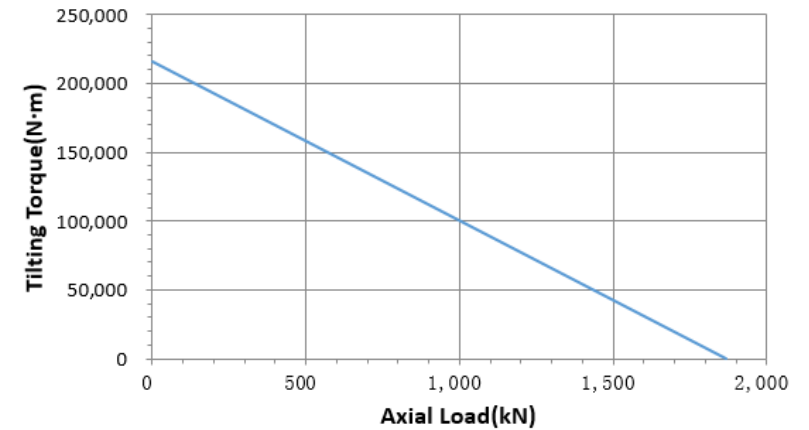
VIEW E-E



Gear data

Module	m_n	6.35	Addendum	h_a	5.08
No. of teeth	z	97	Tooth height	h	11.43
Pressure angle	α_n	20°	Modification coefficient	x_n	0
Helix angle		0°	Helix position		-
common normal line	$W \frac{Ebms}{Ebmi}$	205.46 ^{-0.143} -0.286	Cross-tooth No.		
			k		11
Radial run-out		F_v			≤0.50
Max gear tooth load		F_z			46361 N

Tilting Torque VS Axial Load



On the dimensions with parenthesis:

- 1) These are for reference only.
- 2) This is a preliminary dimension and may vary in the actual product.
- 3) If this dimension is important to the application, please communicate this back to KMI.

DESIGNED BY	JXY	2020/11/25
CHECKED BY	C F	2020/11/25
APPROVED BY	WMS	2020/11/25

KMI GROUP
www.kinematicsmfg.com

ALL PROPRIETARY RIGHTS IN THE SUBJECT MATTER HEREOF ARE RESERVED, AND NO PERMISSION IS GRANTED TO REPRODUCE THIS PRINT IN WHOLE OR IN PART, OR TO DISCLOSE ANY OF THE INFORMATION TO OTHERS.

WEIGHT	SCALE
56.417 Kg	1:6

Slewing Ring

SYMBOL ISO	SIZE	A3	SHEET	1/2
THE TOLERANCE NOT MENTIONED IS REFERRED TO ISO2786-VL CASTING TOLERANCE ISO 8062-CT10				

KTE-415T

REV
A